

DP4 4B-2EC

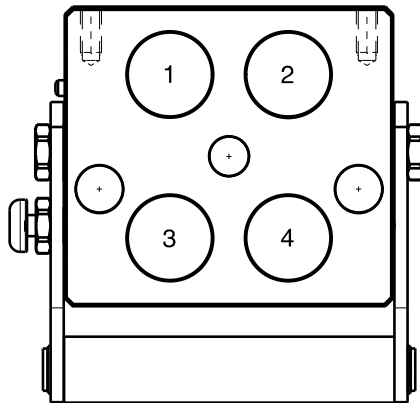
Previous description	Max. Resistance Body size	FAP9 (A) 3/8"	FAP13 (B) 1/2"	FAP15 (C) 5/8"	FAP17 (D) 3/4"	FAP21 (E) 1"	FAP30 (G) 1-1/2"
DP4-13ZN	17000 N		4				



DRAWING



CONFIGURATIONS



Possible configurations		
Pos	Coupling size	Predisposition for electrical connector
1	FAP13ZN	-
2	FAP13ZN	YES
3	FAP13ZN	YES
4	FAP13ZN	-

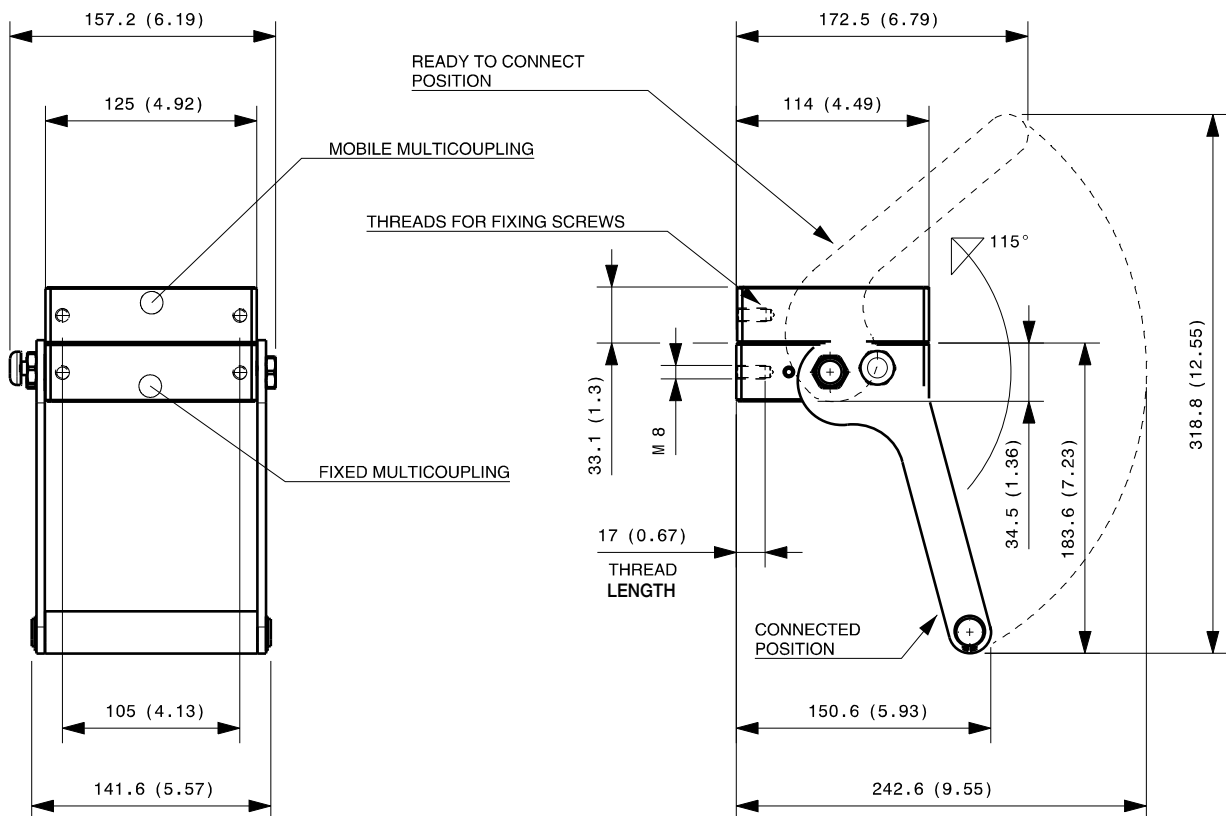
MultiCoupling (couplings included)		
Code	Name	Description
870012007	MULTI COMPLETE DP4 4B	4 FAP13 3/4 BSP - CAP
870012008	MULTI COMPLETE DP4 4B	4 FAP13 1/2 BSP - CAP
870012009	MULTI COMPLETE DP4 4B	4 FAP13 1/2 NPT - CAP
870012107	MULTI FIX DP4 4B	4 FAP13 3/4 BSP
870012108	MULTI FIX DP4 4B	4 FAP13 1/2 BSP
870012207	MULTI MOBILE DP4 4B	4 FAP13 3/4 BSP
870012208	MULTI MOBILE DP4 4B	4 FAP13 1/2 BSP

MultiCoupling spare parts (couplings not included)	
Code	Name
806000350	MULTI FIX EMPTY DP4 4B-2EC
806000351	MULTI MOBILE EMPTY DP4 4B-2EC
815606282	CAP FIX MULTICOUPLING DP 125x114
815606283	PARKING STATION MOBILE MULTICOUPLING DP 125x114
815701085	KIT NR.1 COMPLETE LEVER GROUP DP

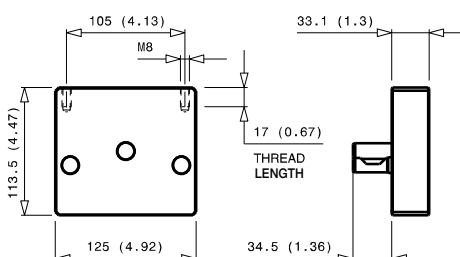
Custom configurations available upon request

Fixed and mobile multicoupling

2,0 Kg and 1,0 Kg



Dimensions in millimeters (inch)

Cap for fixed multicoupling 1,0 Kg

Parking station for mobile multicoupling 1,2 Kg
